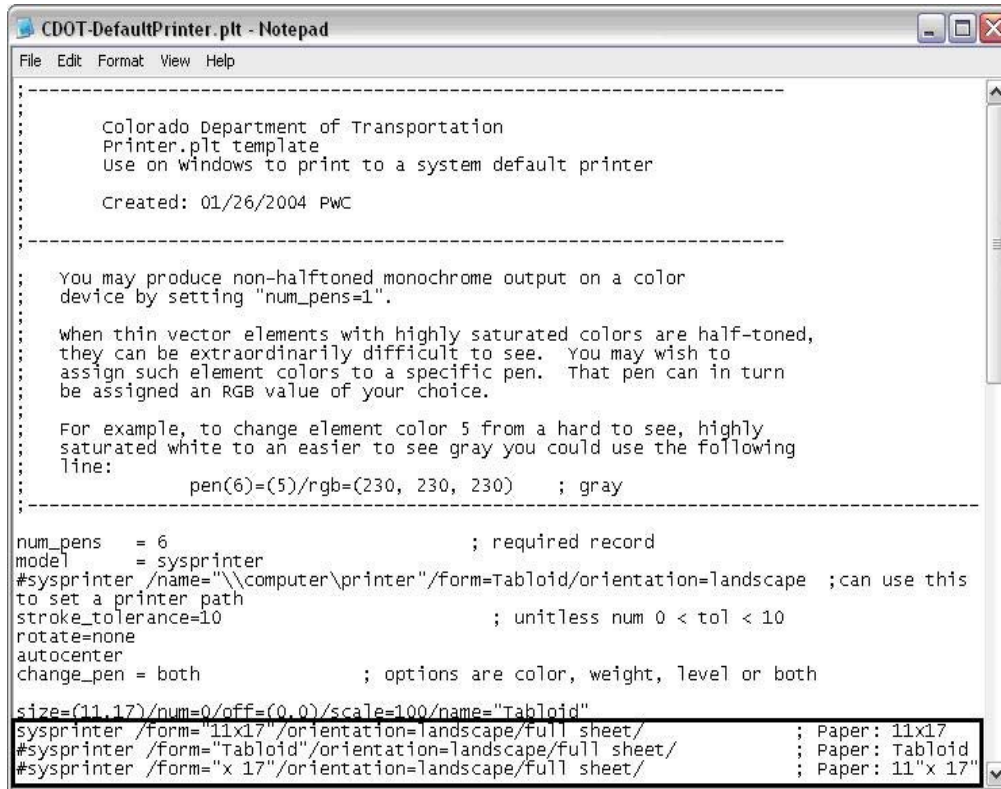


# CDOT Printer Driver Adjustments



The default Print Driver for MicroStation has been set up for 11x17 printing and should not have to be edited. However, printers can vary in the naming convention for 11x17 inch sized paper. If the default paper size does not set automatically, you should try making the following adjustments. The CDOT default printer driver is located under: C:\Program Files\Workspace-CDOT\Standards-Global\MicroStation\Plotter Driver\.

The name of the file is **CDOT\_DefaultPrinter.plt**. Open the file using Notepad. You will see this display after the file is opened.

A screenshot of a Notepad window titled "CDOT-DefaultPrinter.plt - Notepad". The window contains a text file with the following content:

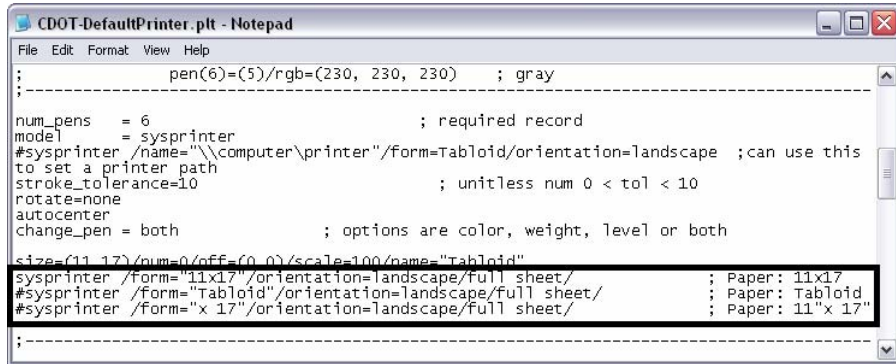
```
-----  
: Colorado Department of Transportation  
: Printer.plt template  
: use on windows to print to a system default printer  
: Created: 01/26/2004 PWC  
-----  
:  
: You may produce non-half-toned monochrome output on a color  
: device by setting "num_pens=1".  
:  
: when thin vector elements with highly saturated colors are half-toned,  
: they can be extraordinarily difficult to see. You may wish to  
: assign such element colors to a specific pen. That pen can in turn  
: be assigned an RGB value of your choice.  
:  
: For example, to change element color 5 from a hard to see, highly  
: saturated white to an easier to see gray you could use the following  
: line:  
:           pen(6)=(5)/rgb=(230, 230, 230) ; gray  
-----  
num_pens = 6 ; required record  
model = sysprinter  
#sysprinter /name="\\computer\printer"/form=Tabloid/orientation=landscape ;can use this  
to set a printer path  
stroke_tolerance=10 ; unitless num 0 < tol < 10  
rotate=none  
autocenter  
change_pen = both ; options are color, weight, level or both  
size=(11,17)/num=0/off=(0,0)/scale=100/name="Tabloid"  
sysprinter /form="11x17"/orientation=landscape/full sheet/ ; Paper: 11x17  
#sysprinter /form="Tabloid"/orientation=landscape/full sheet/ ; Paper: Tabloid  
#sysprinter /form="x 17"/orientation=landscape/full sheet/ ; Paper: 11"x 17"
```

The line items highlighted in the above screen capture need to be edited to enable the system printer feature in the printer driver.

The first line item is active by default because it does not have the “#” symbol in front of the line. Having the “#” symbol at the beginning of the line disables that command line.

## CDOT Printer Driver Adjustments.pdf

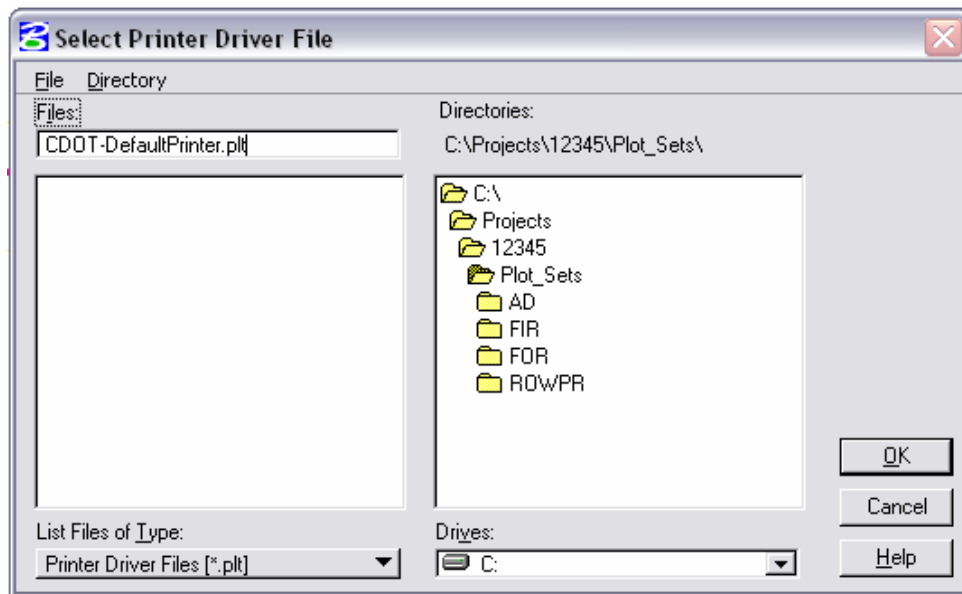
Check the preferences on the printer you will be printing to for the sheet size defined by the printer. Typically the sizes will be one of the three: **11x17**, **Tabloid** and **11"x17"**. If the printer defines a sheet size other than **11x17**, you will need to edit the **CDOT-DefaultPrinter.plt** file.



```
CDOT-DefaultPrinter.plt - Notepad
File Edit Format View Help
;----- pen(6)=(5)/rgb=(230, 230, 230) ; gray
;-----
num_pens = 6 ; required record
model = sysprinter
#sysprinter /name="\\computer\printer"/form=Tabloid/orientation=landscape ;can use this
to set a printer path
stroke_tolerance=10 ; unitless num 0 < tol < 10
rotate=none
autocenter
change_pen = both ; options are color, weight, level or both
size=(11 17)/num=0/off=(0 0)/scale=100/name="Tabloid"
sysprinter /form="11x17"/orientation=landscape/full sheet/ : Paper: 11x17
#sysprinter /form="Tabloid"/orientation=landscape/full sheet/ : Paper: Tabloid
#sysprinter /form="x 17"/orientation=landscape/full sheet/ : Paper: 11"x 17"
;-----
;
```

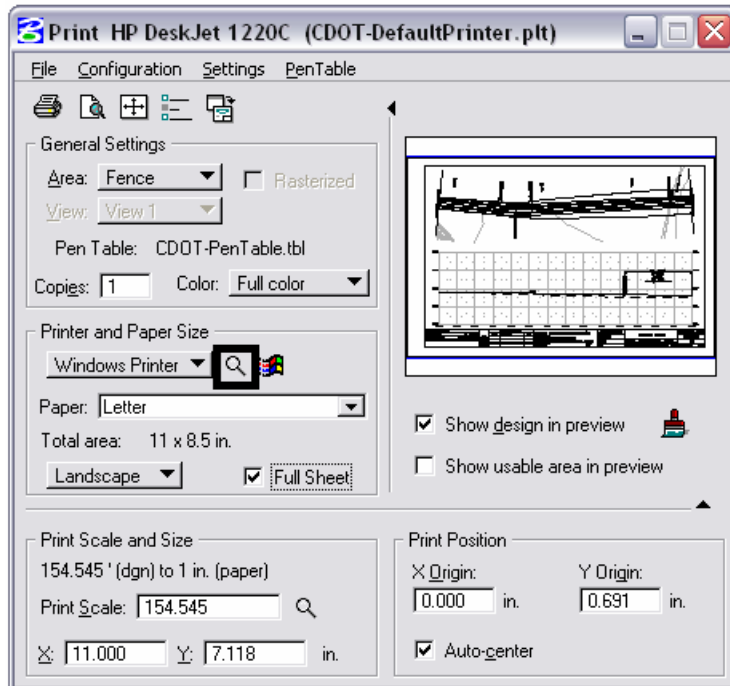
To edit the *plt* file with the correct sheet size preference, add a “#” symbol to the beginning of the 11x17 sheet size line. This will make the **11x17** option inactive and allows you to select either the **Tabloid** or the **11"x17"** option. Simply remove the “#” symbol from the line for the option needed.

Once the file has been edited, save a copy of **CDOT-DefaultPrinter.plt** in your project’s **Plot\_Sets** folder. If you save the changes back to the original file located at **C:\Program Files\Workspace-CDOT\Standards-Global\MicroStation\Plotter Driver\**, the file will be overwritten the next time you log into your workstation.



## CDOT Printer Driver Adjustments.pdf

In the **Print** dialog box, <D> the **Search** icon next to **Windows Printer**. Navigate to your project's **Plot\_Sets** directory and select the edited **plt** file. This will now become the default settings until you select a different **plt** file.



Once you have selected the correct **plt** file, you will notice the Paper size is defaulting to these new settings and the print preview is now correct.

